

On-Street Parking Management for Winter Maintenance

Interneighborhood Council Work Session
April 10, 2025



Operational Challenges - Street Maintenance

Service Goal:

- Clear each local street once per week after 4" of accumulation

Operation:

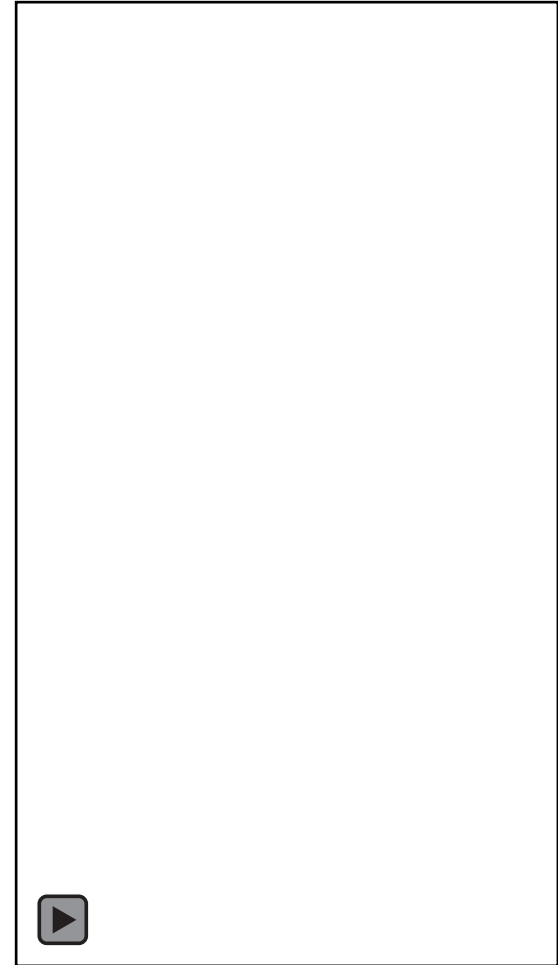
- Service performed using motor graders equipped with snow gates and support equipment

Production Target:

- 4 mph per grader

Parking Requirement:

- Clear access to curb for snow storage



Operational Challenges - Street Maintenance

Service Goal:

- Clear each local street once per week after 4" of accumulation

Operation:

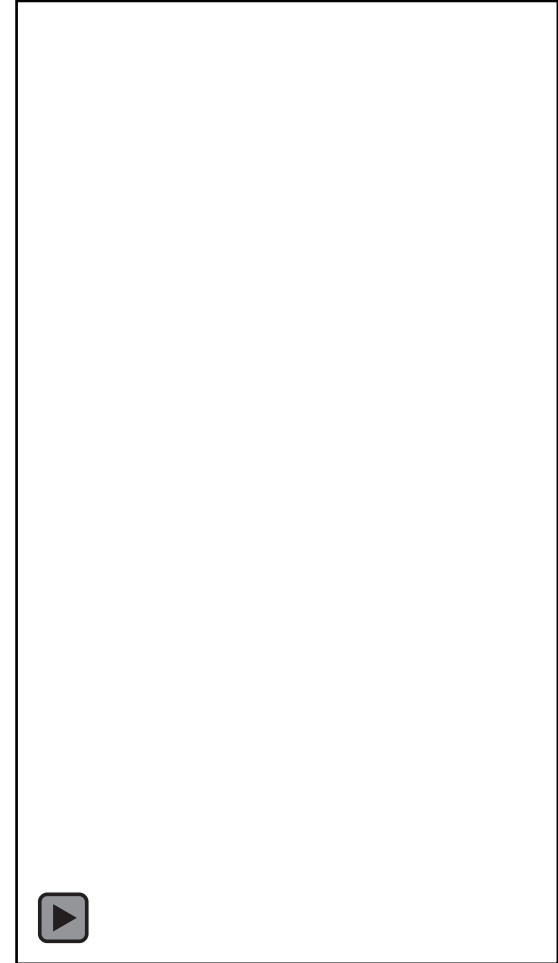
- Service performed using motor graders equipped with snow gates and support equipment

Production Target:

- 4 mph per grader

Parking Requirement:

- Clear access to curb for snow storage



Operational Challenges - Street Maintenance

Service Goal:

- Clear each local street once per week after 4" of accumulation

Operation:

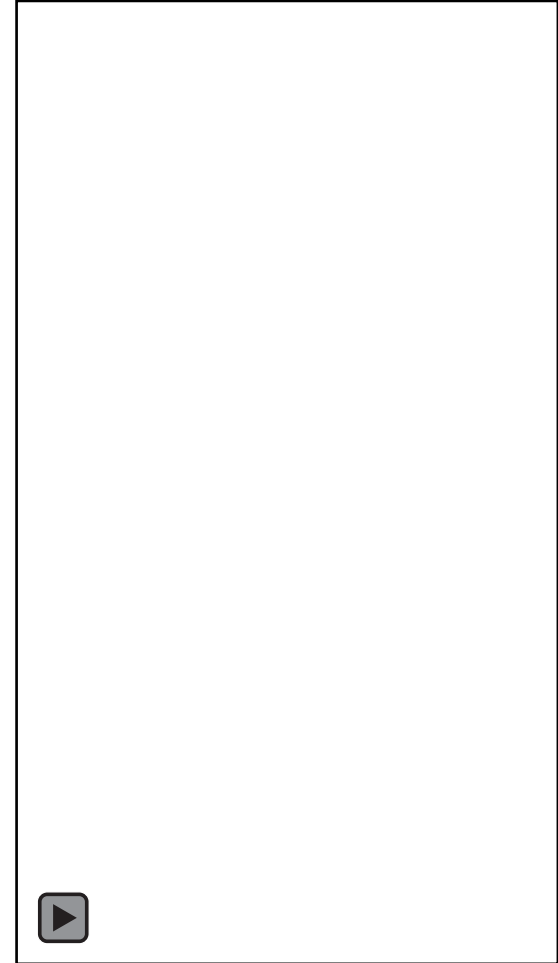
- Service performed using motor graders equipped with snow gates and support equipment

Production Target:

- 4 mph per grader

Parking Requirement:

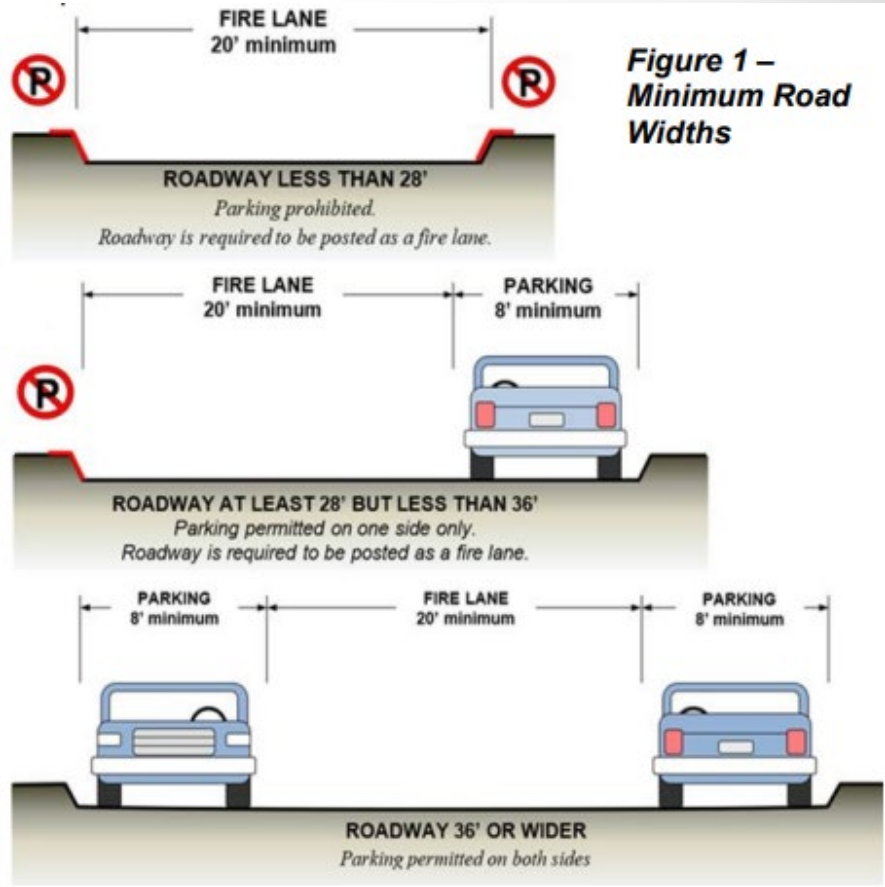
- Clear access to curb for snow storage



Operational Challenges – Emergency Services

International Fire Code Standards

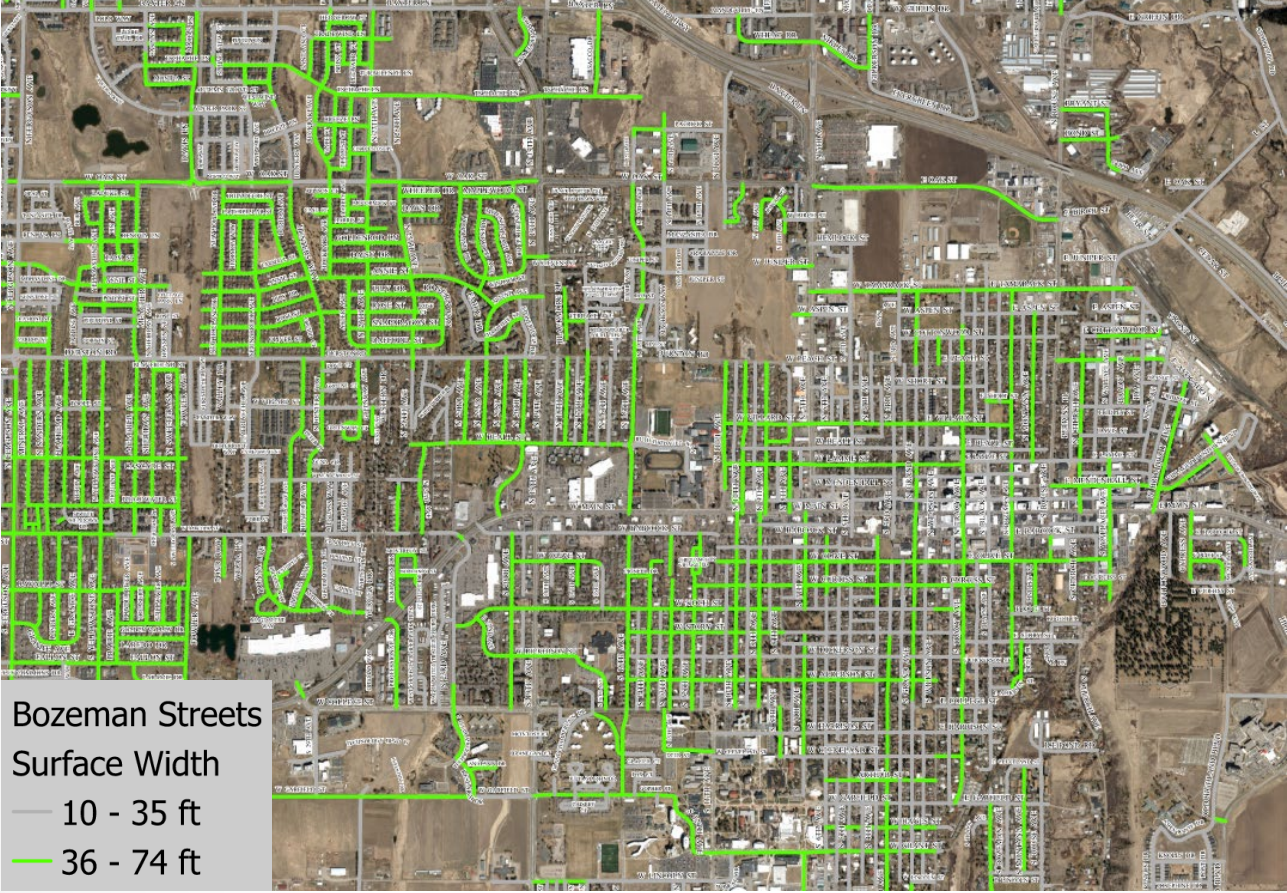
- **503.2.1 Dimensions.** Fire apparatus access roads shall have an unobstructed width of not less than 20 feet (6096 mm), exclusive of shoulders, except for *approved* security gates in accordance with [Section 503.6](#), and an unobstructed vertical clearance of not less than 13 feet 6 inches (4115 mm)



Source: Orange County (CA) Fire Authority, Fire Master Plan for Commercial & Residential Development

Operational Challenges – Emergency Services

City of Bozeman Street Widths



Operational Challenges – Emergency Services

City of Bozeman Standard Street Width



Lily Drive, 35' curb-to-curb

Operational Challenges – Emergency Services

City of Bozeman Legacy Street Width



S. Grand, 31'-32' curb-to-curb

Operational Challenges – Transportation Services

Services Impacted by Surface and Width:

- School Buses
- Galavan
- Mail & Deliveries




2025 Odd-Even Parking Pilot Program Review


Trial program for alternate-side parking restrictions

Snow Plowing Odd-Even Parking Schedule

On the first and third Tuesdays of the month,
PARK ON THE SIDE OF THE STREET WITH ODD HOUSE NUMBERS
(west and north sides of the street).
FEB 4 & 18
MARCH 4 & 18
APRIL 1, 15 & 29

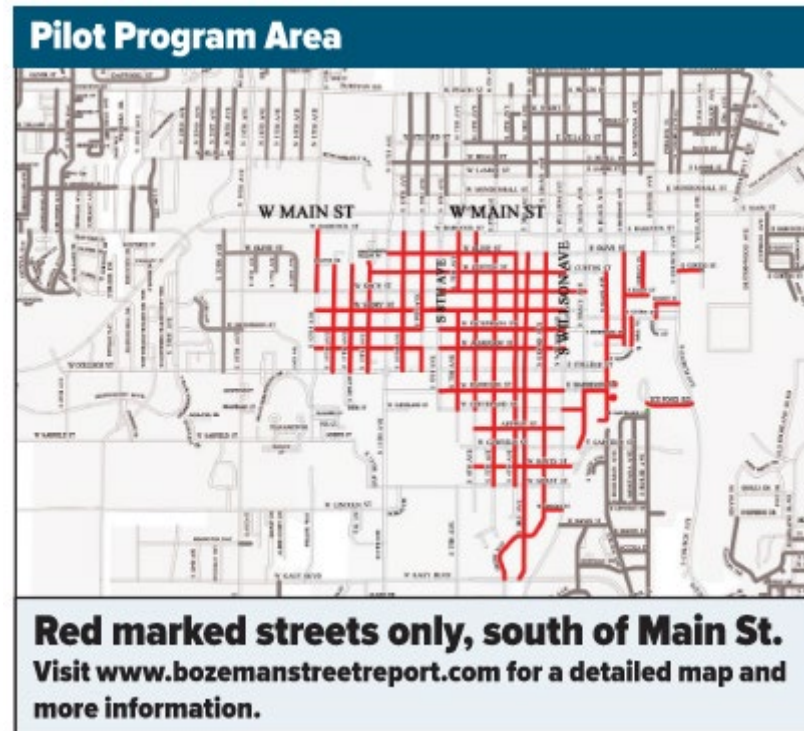


On the second and fourth Tuesdays of the month,
PARK ON THE SIDE OF THE STREET WITH EVEN HOUSE NUMBERS
(east and south sides of the street).
FEB 11 & 25
MARCH 11 & 25
APRIL 8 & 22



2025 Odd-Even Parking Pilot Program Review

Local streets in downtown neighborhoods south of Main on the Tuesday snow plowing schedule



Bozeman.net>Departments>Streets>Snow Plowing

2025 Odd-Even Parking Pilot Program Review

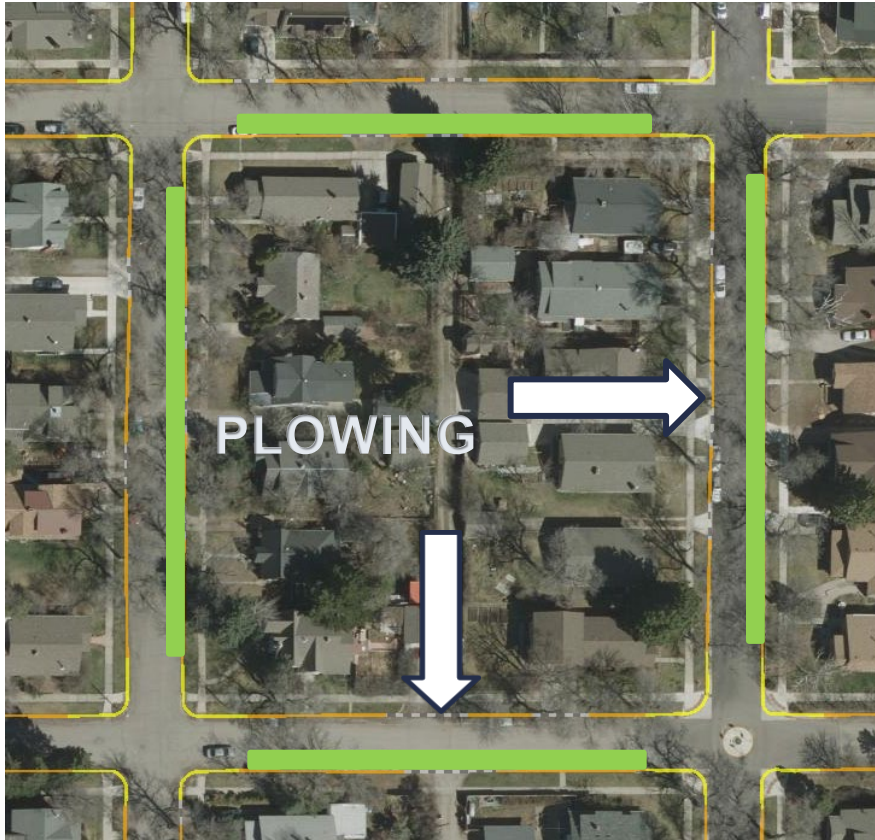
**On the first and third Tuesdays of the month,
PARK ON THE SIDE OF THE STREET WITH ODD HOUSE NUMBERS
(west and north sides of the street).**



 Park here!

2025 Odd-Even Parking Pilot Program Review

**On the second and fourth Tuesdays of the month,
PARK ON THE SIDE OF THE STREET WITH EVEN HOUSE NUMBERS
(east and south sides of the street).**



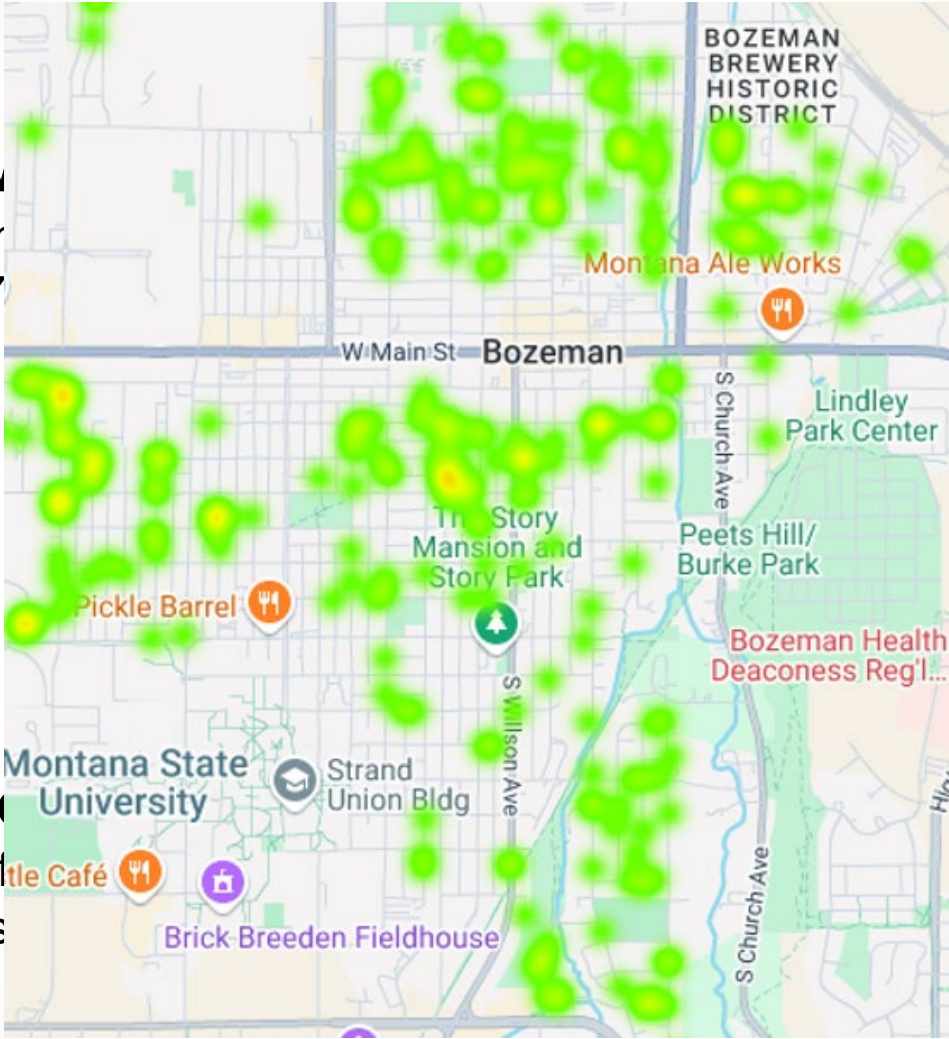
 Park here!

2025 Odd-Even Parking Pilot Program Review

72-hr & "Snow"

- Residents not
- more than 7

in effect
vehicles after no



Odd-Even rule

- Parking Ent
- No fines iss

tional purposes

2025 Odd-Even Parking Pilot Program Review

Lessons Learned:

- Success depended on compliance
 - Blocks with clear access to curb increased productivity
- Compliance depended on:
 - Parking Utilization
 - Blocks with high utilization of on-street parking saw little movement
 - Physical Signage
 - Resident compliance higher than transitional parkers
 - Enforcement
 - Many chose to ignore knowing regs wouldn't be enforced

Policy Alternatives

No Action

- Maintain status quo, no additional parking management
- Impact to Street Maintenance
 - Continued service failure
- Impact to Emergency Services
 - Continued *risk* of service failure
- Impact to Parking Supply
 - None



Policy Alternatives

Permanent Restrictions

- Permanent restriction of parking on one side of the street
 - Applied to streets under 35' width
 - Examples: N Grand, N Tracy, S Black, S Church, E Story, W Koch
 - Requires moderate level of additional Park Enforcement
- Impact to Street Maintenance
 - Ability to meet level of service
- Impact to Emergency Services
 - No risk of service failure
- Impact to Parking Supply
 - Significant
 - ~50% of streets <35' width
 - 50% parking removal on those streets

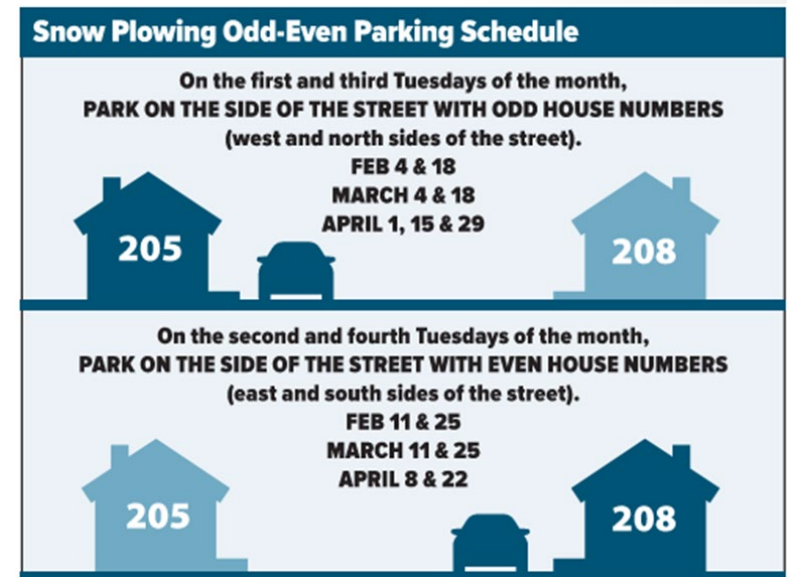


N. Grand, 31'-32' curb-to-curb

Policy Alternatives

Alternate-side Restrictions

- Seasonal restriction of parking alternating on one side of the street
 - Permanent adoption of Odd-Even Parking Pilot Program
 - Requires significant increase Parking Enforcement and fines
- Impact to Street Maintenance
 - Ability to meet level of service
 - Significant cost of sign installation
 - Phased implementation
- Impact to Emergency Services
 - No risk of service failure
- Impact to Parking Supply
 - Temporary
 - Applied to all streets without existing parking restrictions



Policy Alternatives

Expansion of Overnight Restrictions

- Increase zone of existing 2am-7am parking restriction
 - Lamme to Olive, N 7th/8th to Broadway/S Wallace
 - Requires moderate level of additional Parking Enforcement



Applied to all Green zones currently with all-day parking

Questions for Staff

&

INC Feedback

- Preferred Alternative
- Months Applied to Temporary Restrictions