

How to Install a WaterSense® Irrigation Controller

What is a WaterSense® Irrigation Controller?

An EPA certified WaterSense® Irrigation Controller uses either local weather and landscape conditions or soil moisture levels to water your lawn. If you are in the market for a new controller, we recommend going with a WaterSense® labeled one.

Irrigation controller purchasing considerations:

- The number of zones in use by your existing controller - you want your new one to have the same or more zones.
- The location of your current controller - is it outside or inside?
- Smartphone compatibility if you prefer to control your system via an app on your smartphone.
- Sensor compatibility - if your existing controller already has a rain sensor and/or soil moisture probe connected to it, be sure that your new controller supports these features too.



How to install a new controller

Step 1: Record your existing controller's watering schedule. Be sure to note all start times, zone run times, and days of the week scheduled to run.

Step 2: Observe your existing controller's wiring, which may be located on the back side of the panel or within a removable cover along the bottom. Take a photo of the wire setup to reference while installing your new controller.

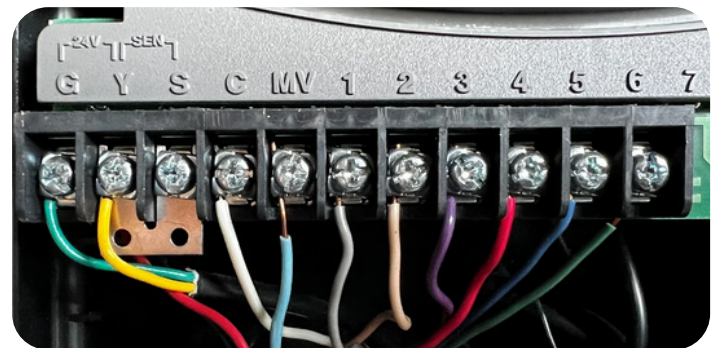
Step 3: Unplug the controller from its power source. Then, disconnect the wires from each zone in use. You may need to unscrew a locking nut that connects to the conduit in each port.

Step 4: Dismount your existing controller from the wall and set aside.

Step 5: Securely mount your new controller according to manufacturer instructions. Be mindful of the length of the wires and distance from your power source.

Step 6: Using the photo of your wiring from your old controller, connect each wire to its respective terminal. Reference your new controller's manual if there are any discrepancies.

Step 7: Connect your new controller to the power supply and begin programming it. Reference the manufacturer's user manual to ensure proper setup and then begin to test each zone.



Controller wiring may differ across models, but labeling should appear similar to this:

G & Y = 24 VAC power

Y & S = Used for rain/soil sensors

C = Common wire

MV = Master Valve wire

1-7 = Specific Zones' wire (ex: 1 - Zone 1)

Need help with programming your controller? Check out our [Irrigation Controller Programming Tutorial](#).

Programming a smart controller

When installing a smart controller, it is crucial to enter accurate information that reflects both the conditions of your irrigation system, as well as your landscape.

You may be prompted to enter the following details for each zone:

- Vegetation Type - cool season turf, shrubs, annuals, etc.
- Sprinkler Type - spray heads, rotors, drip, etc.
- Soil Type - silt, sand, clay, etc.
- Sun Exposure - full sun, part sun, full shade, etc.
- Slope of the zone



Smart controllers require thorough programming to create efficient irrigation schedules that save water.

Did you know? The City of Bozeman offers a rebate of up to \$250 for the installation of EPA WaterSense® labeled controllers, many of which can be controlled by your smartphone. Learn more and access the rebate application by visiting www.bozemanwater.com.

Disclaimer: The City of Bozeman has mandatory, permanent time-of-day and day-of-week outdoor watering restrictions for the use of overhead spray irrigation (including hose end sprinklers). Watering may only occur before 10am and after 8pm. Permitted watering days are as follows:

- EVEN number physical addresses: Tuesday, Thursday, Saturday
- ODD number physical addresses: Wednesday, Friday, Sunday