

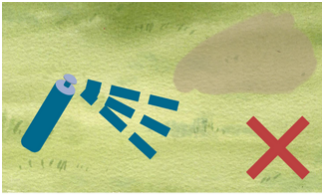
## Instructions for Leveling Sprinkler Heads

### How do sprinklers become unlevel?

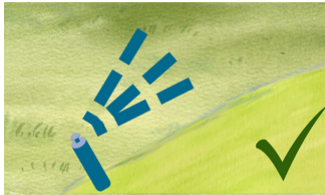
Over time, sprinkler heads can sink and settle in the soil, causing them to spray water where it is not wanted. A sprinkler head is operating at its highest efficiency when the spray pattern is positioned parallel to the landscape and its spray is reaching adjacent heads - this is called 'head to head coverage'. When heads become sunken and tilted they are not able to achieve head to head coverage, reducing their water efficiency.

### How do I know if my nozzle needs adjusting?

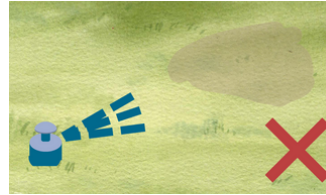
While a zone is running, look for sprinkler heads that are tilted or sunken in the soil. Sprinkler heads perform optimally when spraying about 4-6" above the ground with a spray pattern that is parallel to the landscape.



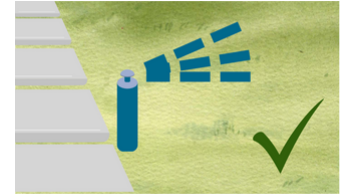
*This tilted head needs to be leveled so that the spray is positioned parallel to the grade of the landscape. This will encourage the spray to reach its intended target area.*



*This sprinkler head is intentionally tilted upward so that the spray is distributed in parallel to the sloped landscape. No adjustments are required.*



*The spray from this sunken sprinkler head is unable to reach its intended target, creating a dry spot on the landscape. Level the head to return it to its optimal operating height.*



*This sprinkler does not require adjustments because the spray is positioned parallel to the landscape grade.*

### How do I level a sunken or tilted sprinkler head?

**Step 1:** Dig an 8-10" wide circle around the sprinkler head.

**Step 2:** Begin digging down around the sprinkler head until the fittings on the bottom of the sprinkler head are exposed.

**Step 3:** Realign or raise the head so that the top of the sprinkler body is level with the ground. Note that on slopes, the sprinkler body may intentionally be tilted up or down to spray level to the grade.

**Step 4:** Once your sprinkler head is positioned correctly, refill the hole around it with soil, roughly a third at a time, taking care to tamp each portion of dirt in with your shovel handle.



**Pro Tip:** Over time, it's likely that new sprinkler heads may become tilted or sunken on your landscape. To prevent dry spots from arising on your landscape throughout the summer, check for unlevel heads when you start up your irrigation system each season. For sloped irrigation zones, be sure to tilt the head to accommodate the slope.